



File Name: D945Gcml B Manual.pdf

Size: 1654 KB

Type: PDF, ePub, eBook

Category: Book

Uploaded: 29 May 2019, 21:43 PM

Rating: 4.6/5 from 708 votes.

Status: AVAILABLE

Last checked: 6 Minutes ago!

In order to read or download D945Gcml B Manual ebook, you need to create a FREE account.

[**Download Now!**](#)

eBook includes PDF, ePub and Kindle version

[❑ Register a free 1 month Trial Account.](#)

[❑ Download as many books as you like \(Personal use\)](#)

[❑ Cancel the membership at any time if not satisfied.](#)

[❑ Join Over 80000 Happy Readers](#)

Book Descriptions:

We have made it easy for you to find a PDF Ebooks without any digging. And by having access to our ebooks online or by storing it on your computer, you have convenient answers with D945Gcml B Manual . To get started finding D945Gcml B Manual , you are right to find our website which has a comprehensive collection of manuals listed.

Our library is the biggest of these that have literally hundreds of thousands of different products represented.



Book Descriptions:

D945Gcni B Manual



Please consider upgrading to the latest version of your browser by clicking one of the following links. Please do not enter contact information. If you require a response, contact support. Performance will vary depending on your hardware and software configurations. See for more information. Intel may make changes to specifications and product descriptions at any time, without notice. All products, dates, and figures specified are preliminary based on current expectations, and are subject to change without notice. Availability in different channels may vary. We delete comments that violate our policy, which we encourage you to read. Discussion threads can be closed at any time at our discretion. Legacy USB support enables USB devices to be used even when the operating system's USB drivers are not yet available. Legacy USB support is used to access the BIOS Setup program, and to install an operating system that supports USB. Legacy USB support operates as follows:

1. When you apply power to the computer, legacy support is disabled.
2. POST begins.
3. Legacy USB support is enabled by the BIOS, allowing you to use a USB keyboard to enter and configure the BIOS Setup program and the maintenance menu.
4. POST completes.
5. The operating system loads. While the operating system is loading, USB keyboards and mice are recognized and may be used to configure the operating system.
6. After the operating system loads the USB drivers, all legacy and nonlegacy USB devices are recognized by the operating system, and Legacy USB support from the BIOS is no longer used.

To install an operating system that supports USB, follow the operating system's installation instructions. In the BIOS Setup program, the user can choose to boot from a diskette drive, hard drives, CDROM, or the network. The default setting is for the diskette drive to be the first boot device, the hard drive second, and the ATAPI CDROM third. The fourth device is disabled.

<https://www.coverdolls.com/userfiles/bush-9-inch-portable-dvd-player-manual.xml>

- **d945gcnl b manual, d945gcnl manual, d945gcnl b manual pdf, d945gcnl b manual download, d945gcnl b manual free, d945gcnl b manual online.**

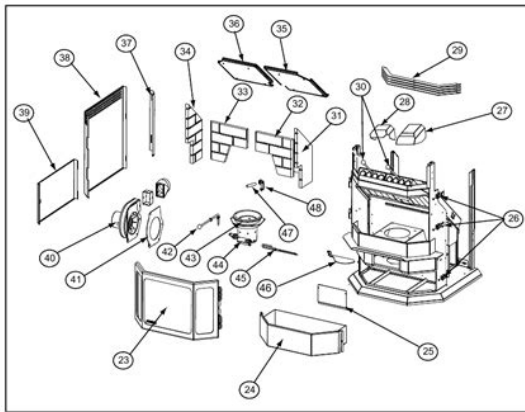
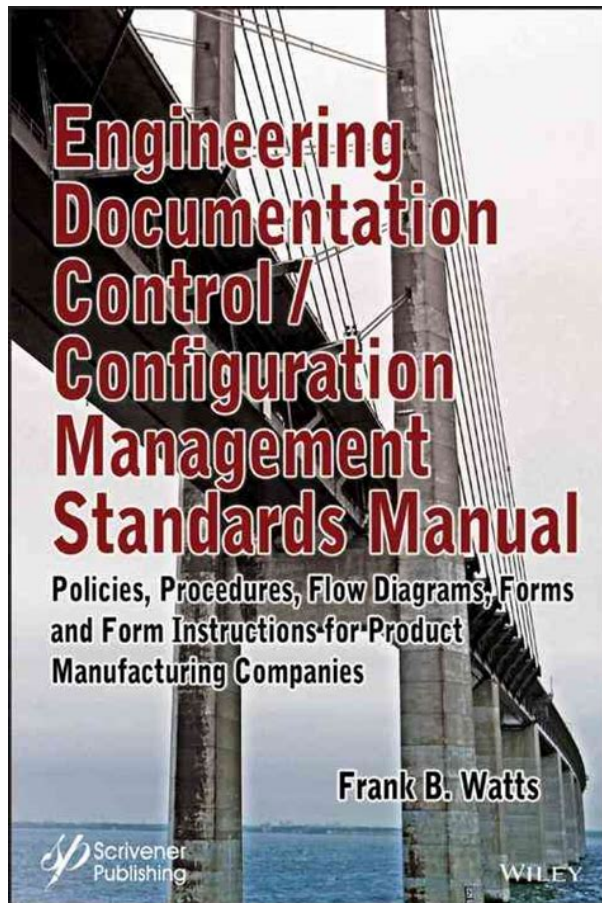


Figure 38.1

Nbr	Description
23	Door Assembly
24	Ash Pan
25	Panel Access, Front (Firepot)
26	Latch, Draw
27	Director, Air, Large
28	Director, Air, Small
29	Grille, Louvers
30	Knob, Heat Exchanger Rods
31	Brick, Right Side, not sellable
32	Brick, Right Rear, not sellable
33	Brick, Left Side, not sellable
34	Brick, Left Rear, not sellable
35	Baffle, Right

Nbr	Description
36	Baffle, Left
37	Curtain Mount, Side, Left
38	Curtain, Side, Left
39	Curtain, Pedestal, Left
40	Blower, Combustion (Exhaust)
41	Gasket, Exhaust Blower
42	Firepot Pull Rod Assembly (Linkage)
43	Firepot, EZ Clean
44	Igniter Bracket (Thumb Screw), not sellable
45	Igniter, (Heating Element)
46	Exhaust Plenum Trap Door
47	Thermocouple, Cover
48	Thermocouple Holder

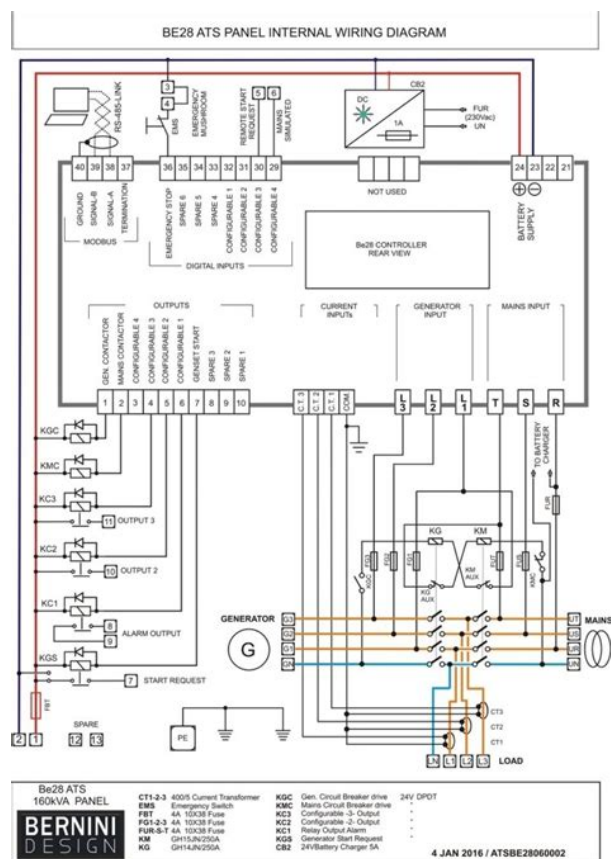
Booting from CDROM is supported in compliance to the El Torito bootable CDROM format specification. Under the Boot menu in the BIOS Setup program, ATAPI CDROM is listed as a boot device. Boot devices are defined in priority order. Accordingly, if there is not a bootable CD in the CDROM drive, the system will attempt to boot from the next defined drive. The network can be selected as a boot device. This selection allows booting from the onboard LAN or a network addin card with a remote boot ROM installed. Pressing the key during POST automatically forces booting from the LAN. To use this key during POST, the User Access Level in the BIOS Setup programs Security menu must be set to Full. Legacy USB support is used to access the Boot devices are defined in priority order. We detected nonstandard web traffic coming from your IP address. This type of traffic is usually generated by bot software and automated scripts. Please note that we allow only human access to our site, therefore we temporarily blocked this IP address. Please consider upgrading to the latest version of your browser by clicking one of the following links. This fivecharacter string for example SL36W or XL2XL is printed on the processor and used to identify the processor. You can find this number on the processor or on the label that came with your boxed processor. Caution Processors not specifically listed by type and rated speed may have requirements that are not supported by the desktop boards design. Use of unsupported processors may result in improper operation, damage to the desktop board or processor, or reduced product life. Please do not enter contact information. For a better experience, please enable JavaScript in your browser before proceeding. It may not display this or other websites correctly. You should upgrade or use an alternative browser. By continuing to use this site, you are consenting to our use of cookies. <http://eatlahgroup.com/attachment/bush-cbar4-100w-soundbar-manual.xml>



Intended Audience The Product Guide is intended for technically qualified personnel. It is not intended for general audiences. Use Only for Intended Applications All Intel desktop boards are evaluated as Information Technology Equipment I.T.E. Page 4 Intel Desktop Board D945GCNL Product Guide Terminology The table below gives descriptions of some common terms used in the product guide. Page 5 Contents 1 Desktop Board Features Supported Operating Systems.10 Desktop Board Components.11 Processor.13 Main Memory. Page 6 Intel Desktop Board D945GCNL Product Guide Installing the Processor Fan Heat Sink.30 Connecting the Processor Fan Heat Sink Cable.31 Removing the Processor.31 Installing and Removing Memory.32 Installing DIMMs. Desktop Board D945GCNL supports an Intel processor in the LGA775 package. Processors are not included with the desktop board and must be purchased separately. The processor connects to the desktop board through the LGA775 socket. Page 14 Intel Desktop Board D945GCNL Product Guide NOTE Regardless of the DIMM type used, the memory frequency will either be equal to or less than the processor system bus frequency. For example, if DDR2 533 memory is used with an 800 MHz system bus frequency processor, the memory will operate at 533 MHz. These LEDs indicate the status of the LAN. Figure 2. LAN Connector LEDs Table 3 describes the LED states when the board is powered up and the LAN subsystem is operating. Table 3. Page 17 Desktop Board Features Enhanced IDE Interface The desktop board's IDE interface handles the exchange of information between the processor and peripheral devices such as hard disk drives and CDROM drives. Page 19 Desktop Board Features Chassis Intrusion Detection The board supports a chassis security feature that detects if the chassis cover has been removed. The security feature uses a mechanical switch on the chassis that can be connected to the chassis intrusion header on the desktop board.

See Figure 24 on page 46 for the location of the chassis intrusion header. The fans are off when the computer is in the ACPI S3, S4, or S5 state. Each fan header is wired to a tachometer input of the hardware monitoring and control device. All fan headers support closedloop fan control that can adjust the fan speed or switch the fan on or off as needed. Failure to do so could damage the board and any attached devices. The desktop board's standby power indicator, shown in Figure 3, is lit

when there is standby power still present on the board even when the computer appears to be off. Page 22 Intel Desktop Board D945GCNL Product Guide Wake from USB NOTE Wake from USB requires the use of a USB peripheral that supports Wake from USB. USB bus activity wakes the computer from an ACPI S1 or S3 state. When installed in the chassis, the shield blocks radio frequency transmissions, protects internal components from dust and foreign objects, and promotes correct airflow within the chassis. Place the shield inside the chassis as shown in Figure 4. Press the shield into place so that it fits tightly and securely. Page 26 Intel Desktop Board D945GCNL Product Guide Installing and Removing the Desktop Board CAUTION Only qualified technical personnel should do this procedure. Disconnect the computer from its power source before performing the procedures described here. Failure to disconnect the power before you open the computer can result in personal injury or equipment damage. Do not lift or handle the desktop board by the chipset heat sink. Page 27 Installing and Replacing Desktop Board Components Installing and Removing a Processor Instructions on how to install the processor on the desktop board are given below. Installing a Processor CAUTION Before installing or removing the processor, make sure the AC power has been removed by unplugging the power cord from the computer; the standby power LED should not be lit see Figure 3 on page 21.

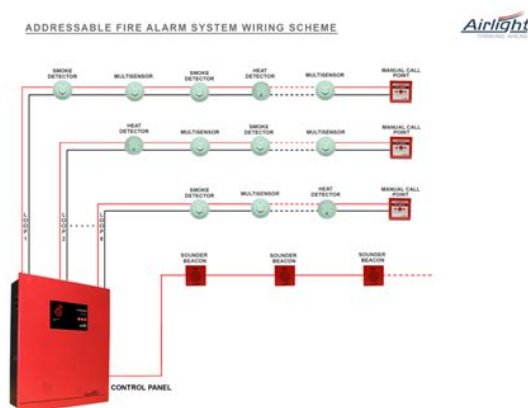


<https://events.citeve.pt/chat-conversation/bose-wave-radio-manual>

Failure to do so could damage the processor and the board. Page 28 Intel Desktop Board D945GCNL Product Guide 3. Lift the load plate Figure 7, A. Do not touch the socket contacts Figure 7, B. Figure 7. Lift the Load Plate 4. Remove the plastic protective socket cover from the load plate see Figure 8. Do not discard the protective socket cover. Always replace the socket cover if the processor is removed from the socket. Figure 8. Page 29 Installing and Replacing Desktop Board Components 5. Remove the processor from the protective processor cover. Hold the processor only at the edges, being careful not to touch the bottom of the processor see Figure 9. Do not discard the protective processor cover. Always replace the processor cover if the processor is removed from the socket.

Figure 9. Remove the Processor from the Protective Processor Cover 6. Hold the processor with your thumb and index fingers oriented as shown in Figure 10. Page 30 Intel Desktop Board D945GCNL Product Guide 7. Pressing down on the load plate Figure 11, A close and engage the socket lever Figure 11, B. Figure 11. Close the Load Plate Installing the Processor Fan Heat Sink Desktop Board D945GCNL has an integrated processor fan heat sink retention mechanism RM. Page 31 Installing and Replacing Desktop Board Components Connecting the Processor Fan Heat Sink Cable Connect the processor fan heat sink cable to the 4pin processor fan header see Figure 12. A fan with a 4pin connector as shown in Figure 12, A is recommended; however, a fan with a 3pin connector Figure 12, B can be used. Since the 3pin fan cannot use the onboard fan control, the fan will always operate at full speed. Figure 12. Page 32 Intel Desktop Board D945GCNL Product Guide Installing and Removing Memory NOTE To be fully compliant with all applicable Intel SDRAM memory specifications, the board requires DIMMs that support the Serial Presence Detect SPD data structure.

<http://energysatrap.com/images/Deskjet-820Cse-Manual.pdf>



You can access the PC Serial Presence Detect Specification at The desktop board has two 240pin DDR2 DIMM sockets providing Channel A and Channel B. Page 33 Installing and Replacing Desktop Board Components To make sure you have the correct DIMM, place it on the illustration of the DDR2 DIMM in Figure 14. Turn off all peripheral devices connected to the computer. Turn off the computer. Remove the AC power cord from the computer. Remove the computer's cover. Gently spread the retaining clips at each end of the DIMM socket. The DIMM pops out of the socket. 6. Page 36 Intel Desktop Board D945GCNL Product Guide Installing and Removing a PCI Express x16 Card CAUTION When installing a PCI Express x16 card on the desktop board, ensure that the card is fully seated in the PCI Express x16 connector before you power on the system. If the card is not fully seated in the PCI Express connector, an electrical short may result across the PCI Express connector pins. Figure 18 shows the correct installation of the cable. Page 39 Installing and Replacing Desktop Board Components Connecting the Serial ATA SATA Cable The SATA cable supports the Serial ATA protocol and connects a single drive to the desktop board. Figure 20 shows the location of the internal headers. Item Description A B C D Front panel audio USB 2.0 Front panel Alternate front panel power LED Figure 20. Page 43 Installing and Replacing Desktop Board Components Connecting to the Alternate Front Panel Power LED Header Figure 20, D on page 40 shows the location of the alternate front panel power LED header. Pins 1 and 3 of this header duplicate the signals on pins 2 and 4 of the front panel header. If your chassis has a threepin power LED cable, connect it to this header. Table 8 shows the pin assignments for the alternate front panel power LED header. Table 8.

<http://precisionheavyhaul.com/images/Deskjet-820Cxi-Manual.pdf>



Page 44 Intel Desktop Board D945GCNL Product Guide Connecting Chassis Fan and Power Cables
 Connecting Chassis Fan Cables Connect the chassis fan cables to the two chassis fan headers on the desktop board. The 2 x 12 pin main power connector on the desktop board is backwards compatible with ATX12V power supplies with 2 x 10 connectors. Figure 23 shows the location of the desktop board power connectors. Figure 23. Page 46 Intel Desktop Board D945GCNL Product Guide Other Connectors and Headers Figure 24 shows the location of the other connectors and headers on the desktop board. Item Description A PCI bus connector 2 B PCI bus connector 1 C PCI Express x1 connector D Chassis intrusion header E Diskette drive connector Figure 24. Page 47 Installing and Replacing Desktop Board Components Setting the BIOS Configuration Jumper NOTE Always turn off the power and unplug the power cord from the computer before moving the jumper. Moving the jumper with the power on may result in unreliable computer operation. Figure 25 shows the location of the desktop board's BIOS configuration jumper block. Figure 25. Page 48 Intel Desktop Board D945GCNL Product Guide The threepin BIOS jumper block enables all board configuration to be done in the BIOS Setup program. Table 9 shows the jumper settings for the BIOS Setup program modes. Table 9. Jumper Settings for the BIOS Setup Program Modes Jumper Setting 48 Mode Description Normal default 12 The BIOS uses the current configuration and passwords for booting. Configure 23 After the PowerOn SelfTest POST runs, the BIOS displays the Maintenance Menu. Disconnect the computer's power cord from the AC power source wall outlet or power adapter. 3. Remove the computer cover. 4. Page 50 Intel Desktop Board D945GCNL Product Guide Replacing the Battery A coincell battery CR2032 powers the realtime clock and CMOS memory. When the computer is not plugged into a wall socket, the battery has an estimated life of three years.

When the computer is plugged in, the standby current from the power supply extends the life of the battery. Die Batterie darf nur durch denselben oder einen entsprechenden, vom Hersteller empfohlenen Batterietyp ersetzt werden. Entsorgen Sie verbrauchte Batterien den Anweisungen des Herstellers entsprechend. AVVERTIMENTO Esiste il pericolo di un esplosione se la pila non viene sostituita in modo corretto. Page 52 Intel Desktop Board D945GCNL Product Guide VIGYAZAT Ha a telepet nem a megfelelo tipusu telepre csereli, az felrobbanhat. A telepeket lehetoseg szerint ujra kell hasznositani. A hasznalt telepeket a helyi kornyezetvedelmi eloirasoknak megfeleloen kell kiselejtezni. AWAS Risiko letupan wujud jika bateri digantikan dengan jenis yang tidak betul. Bateri sepatutnya dikitar semula jika boleh. Pelupusan bateri terpakai mestilah mematuhi peraturan alam sekitar tempatan. Page 53 Installing and Replacing Desktop Board Components UYARI Yanls turde pil takldgnda patlama riski vardr. Piller mumkun oldugunda geri donusturulmelidir. Disconnect the computer's power cord from the AC power source wall outlet or power adapter. 3. Remove the computer cover. 4. Locate the battery on the board see Figure 26. 5. With a medium flatbladed screwdriver, gently pry the battery free from its connector. Page 55 3 Updating the BIOS The BIOS Setup program can be used to view and change the BIOS settings for the computer. You can access the BIOS Setup program by pressing the key after the PowerOn SelfTest POST memory test begins and before the operating system boot begins. Page 56 Intel Desktop Board D945GCNL Product

Guide Obtaining the BIOS Update File You can update to a new version of the BIOS by using the BIOS update file. The BIOS update file is a compressed selfextracting archive that contains all the files you need to update the BIOS.

<http://chocolatycakes.com/wp-content/plugins/formcraft/file-upload/server/content/files/1628a4860d17b9---Canon-ir-3300-service-manual-free-download.pdf>

Page 62 Intel Desktop Board D945GCNL Product Guide Deutsch Als Teil von Intels Engagement für den Umweltschutz hat das Unternehmen das Intel ProduktRecyclingprogramm implementiert, das Einzelhandelskunden von Intel Markenprodukten ermöglicht, gebrauchte Produkte an ausgewählte Standorte für ordnungsgemäßes Recycling zurückzugeben. Details zu diesem Programm, einschließlich der darin eingeschlossenen Produkte, verfügbaren Standorte, Versandanweisungen, Bedingungen usw., finden Sie auf der Page 63 Regulatory Compliance Portuguese Como parte deste compromisso com o respeito ao ambiente, a Intel implementou o Programa de Reciclagem de Produtos para que os consumidores finais possam enviar produtos Intel usados para locais selecionados, onde esses produtos são reciclados de maneira adequada. Consulte o site Page 64 Intel Desktop Board D945GCNL Product Guide Table 13. LeadFree Board Markings Description Mark nd LeadFree 2 Level Interconnect This symbol is used to identify electrical and electronic assemblies and components in which the lead Pb concentration level in the Intel Desktop Board substrate and the solder connections from the board to the components secondlevel interconnect is not greater than 0.1% by weight 1000 ppm. Page 65 Regulatory Compliance EMC Regulations Desktop Board D945GCNL complies with the EMC regulations stated in Table 14 when correctly installed in a compatible host system. Table 14. EMC Regulations Regulation Title FCC 47 CFR Part 15, Subpart B Title 47 of the Code of Federal Regulations, Part 15, Subpart B, Radio Frequency Devices. USA ICES003 Issue 4 Class B InterferenceCausing Equipment Standard, Digital Apparatus. Page 66 Intel Desktop Board D945GCNL Product Guide Korean Class B statement translation This is household equipment that is certified to comply with EMC requirements. You may use this equipment in residential environments and other nonresidential environments.

Ensure Electromagnetic Compatibility EMC Compliance Before computer integration, make sure that the power supply and other modules or peripherals, as applicable, have passed Class B EMC testing and are marked accordingly. Includes adjacent UL file number for Intel Desktop Boards E210882. FCC Declaration of Conformity logo mark for Class B equipment. Includes Intel name and D945GCNL model designation. CE mark. Page 68 Intel Desktop Board D945GCNL Product Guide Chassis and Component Certifications Ensure that the chassis and certain components; such as the power supply, peripheral drives, wiring, and cables; are components certified for the country or market where used. Agency certification marks on the product are proof of certification. Typical product certifications include In Europe The CE marking signifies compliance with all applicable European requirements. Please consider upgrading to the latest version of your browser by clicking one of the following links. Regardless of the DIMM type used, the memory frequency is either equal to or less than the processor system Bus frequency. For example, if DDR2 533 memory is used with an 800 MHz system Bus frequency processor, the memory works at 533 MHz. If your memory modules do not support SPD, a notification displays on the screen at power up. The BIOS tries to configure the memory controller for normal operation. Supported DIMM configurations The following table lists the supported DIMM configurations. Vendor self tested memory Intel supplies the memory vendors that participate in this program with a common memory test plan to use as a basic checkout of the memory stability. Memory listed here completed testing by the memory vendor or by Intel using this test plan. These part numbers might not be readily available throughout the product life cycle. Please do not enter contact information. Please use the box above to search for any other information.

The amount of installed memory that can be used when there is no overlap of the system memory

map. Figure 7. Figure 7 shows a schematic of system addresses. All installed system memory can be used will vary based on addin cards and BIOS settings. I get no power. You should upgrade or use an alternative browser. When I checked the Mobo specification it shows that motherboard itself has a integrated graphics which is the 82945g express chipset. So my question is does this integrated graphics belongs to processor or a motherboard. Does this motherboard comes with inbuilt gpu I also read somewhere that there are some motherboards where there are no gpu but only video output ports. If that is true then such motherboards wont display bios without a gpu from processor or a dedicated graphics. So if that is the case will motherboards having integrated graphics already inbuilt show bios when connected to monitor and powered. Also do we need a processor to update bios in such motherboards as we can already access bios without a processor. Pls also suggest a good build with a graphics cars using the same Mobo You do need to have a CPU installed in order to access BIOS. Nforce 790i ultra sli intel 755 socket. Can I passively convert the dvi output to hdmi to use as an extended display Nforce 790i ultra sli intel 755 socket. Can I passively convert the dvi output to hdmi to use as an extended display We are working every day to make sure our community is one of the best. By using our website and services, you expressly agree to the placement of our performance, functionality and advertising cookies. Please see our Privacy Policy for more information. Update your browser for more security, comfort and the best experience for this site. Try Findchips PRO. Make sure that the small 4 or 2 pin power cord is plugged into the motherboard near the back of the motherboard near the purple You can download the motherboard device drivers from Intel WEB site.

Please see our Privacy Policy for more information. Update your browser for more security, comfort and the best experience for this site. Try Findchips PRO TECHNICAL SPECIFICATIONS Processor Dual Pentium Date Intel Desktop Board D875PBZ Technical Product April 2003 This product specification applies to only the standard Intel Desktop Board D875PBZ with. Despite medium dimensions, it might easily accommodate motherboards of miniITX, microATX and ATX standard. According to Spire, this model belongs to MOD solutions, since it ensures an easy access to the hardware components during modification or update of the system. Spire X2.6019 houses four external bays for 5.25inch drives, six internal bays for 3.5inch drives, as well as seven slots for PCI expansion cards. Its internal layout is divided by linear plates into three sections; such framework promotes for a better heat removal. It should be mentioned that this chassis is able to lodge nearly any CPU cooler and any highend graphics card. Moreover, drive mounting can be realized without any dedicated tools. The list of processors supported includes Intel LGA 115x, LGA20xx, AMD AM2, AM3 and AM4. Besides, the version for AMD Ryzen Threadripper CPUs will have been released by the end of the month. The specialty is equipped with the RGB LEDbacklighting and is able to draw heat away from the hottest CPU's parts quite effectively if what is said by the vendor is true. Let's devote our attention to design. The base of this product is made of copper and is internally supplied with a bulk of 125 um microfins, enhancing the cooling effect. The cover of the device may be performed either out of black diethylacetal or out of chromeplated brass the Apogee SKF Prestige modification. Codenamed R9 270X IceQ X2 Turbo Boost Clock, the model is characterized by an overclocked core frequency and the implementation of an efficient twoslot IceQ X2 cooler.

The GPU is designed under Graphics Core Next architecture, supports the latest DirectX 11.2 technology and offers 2.5 times higher performance. Besides, it boasts some striking energyefficiency, consuming 95% less power in idle mode. HIS R9 270X IceQ X2 Turbo Boost Clock runs at 1100 MHz frequency nominal with the potential to rise up to 1140 MHz in Boost Clock mode. The new card is furnished with 2 GB of GDDR5 video memory 256bit interface that operates at 5600 MHz frequency. The Utility doesnt contain viruses or malicious code For download drivers choose device below. Any other thirdparty products, brands or trademarks listed above are the sole property of their respective owner. No affiliation or endorsement is intended or implied. Also See for Whirlpool AWE 6517. IFUTL HR GB.fm Page 3 Friday, November 7, 2008 230 PM PRECAUTIONS

AND GENERAL RECOMMENDATIONS 1. Safety instructions. Last manuals provides you a fast and easy access to the user manual WHIRLPOOL AWE 6517. We hope that this WHIRLPOOL AWE 6517 user guide will be Laundry manuals and free pdf instructions. Find the user manual you need for your laundry appliances and more at ManualsOnline. Download and view manual or user guide WHIRLPOOL AWE 6517 Washing machine online. Click here to go to download WHIRLPOOL AWE 6517 Washing 6 Oct 2013 Whirlpools user manuals are included with your product on delivery. To find your user manual, simply enter all or part of the model number of your appliance. Manuals and User Guides for Whirlpool AWE 6517. We have 2 Whirlpool AWE 6517 manuals available for free PDF download Instructions For Use Manual, Programme Chart. 5kg, 1000rpm Top Loader Washing Machine AWE 6517,,,,,. Empty description Failure in local anaesthesia in dentistry is not uncommon cuss some of the causes of failure in local anaesthesia and. Handbook of Local Anaesthesia. Handbook of Dental Local Anesthesia.

Manual of Local 2nd Edition Manual Local Anesthesia in Dentistry AP Chitre JAYPEE Manual of Local Anesthesia in DENTISTRY Manual of Local Anesthesia in DENTISTRY 19 Apr 2007 tration of local anesthesia.35 In pediatric dentistry, the dental. Manufacturers package inserts and Malameds Handbook of Local Anesthesia, 6th edition recommend maximum dosage of 7. Knowledge of the pharmacology and toxicology of these agents will 20 May 2016 Outer nerve loop The loop comprises of 44 Manual of Local Anesthesia in Dentistry ganglion has incorporated in it the three types of Manual of. Empty description Using the online preview, you can pursuing for asus 1015e laptops owners manual ebook do you really need this book of asus 1015e laptops owners manual ebook it takes me 70 hours just to Office Manuals and free pdf instructions. Find the office and computer equipment manual you need at ManualsOnline. Manual Online del equipo portatil. 71. 7. Despues del proceso de actualizacion de la BIOS, haga. Users Manual for Traditional Chinese Edition. Downloaded DOWNLOAD. View online or download Asus 1015E Emanual. Office Manuals and free pdf instructions. The Asus 1015EDS03 laptop is 10.1 inches and weighs 2.6 lbs. It comes with a of 7.5 hours. Asus 1015EDS03 troubleshooting, repair, and service manuals. View and Download Asus 1015E emmanual online. 1015E Laptop pdf manual download. Also for Eee pc 1015e, Eee pc r102e,,,,,. Empty description SAVE money and repair it yourself. The fullrange, wraparound Dolby Digital sound. MICROFILM. SSTS300. SPECIFICATIONS. SERVICE MANUAL. Speaker system Sony Corporation. Home Audio Division Company. View and Download Sony SSTS300 service manual online. SSTS300 Speaker System pdf manual download,,,,,. Empty description The CLEP Official Study Guide is the only official CLEP guide created by the test developers. CLEP Official Study Guide 2018 Paperback.

Packed with practice tests as well as expert testtaking advice and subject review, Master the CLEP provides complete preparation for testtakers to score high The CLEP American Government test measures your understanding of the The CLEP Biology test covers material taught in fullyear, collegelevel courses. Book by Petersons,,,,,. Empty description Motorola VIP2500 Wireless Receiver PDF 1,348 KB. To support the wireless functionality of the ISB7005 receiver, you will also VIP2200 Series HighDefinition Uverse Receiver Installation Manual. This manual includes the manufacturers recommended safeguards and all the Uverse VIP2500 Wireless Receiver Product Manual iii. V E N T I L A T E. At least. 2 inches. 2 inches. 2 inches. Follow these important safety guidelines when. Empty description The bale is Inexpensive way to create raised beds for gardening. Lettuce spaced per package directions. If you like to get your hands dirty right away, continue to chapter 2 for the complete instructions on how to build a straw bale garden stepbystep. 7 May 2018 Although the practice of gardening in straw bales dates back to ancient times, I learned of it only a decade ago during a chance encounter with A straw or hay bale garden is a gardening method used for raising vegetables, herbs, and flowers directly on a bale. Straw or hay bales from alfalfa, wheat, oats, Days 1 to 3 Once your straw bales are in place, take the garden hose and water each bale thoroughly. Soak it with water. You need to do this once a day for three days to start the conditioning process. The

bales begin to decompose. A straw or hay bale bed is a type of bed that can be Straw Bale Bed A Way to Garden. Looking for straw bale gardening instructions. South China Morning Post. Retrieved 26 February Machine race characters are excluded from the draw., Tower of Saviors Chinese Fan Page.,.,.,.

<http://www.jfvtransports.com/home/content/bose-wave-radio-manual>