



File Name: canon bg-e2 instruction manual.pdf

Size: 1411 KB

Type: PDF, ePub, eBook

Category: Book

Uploaded: 26 May 2019, 22:54 PM

Rating: 4.6/5 from 683 votes.

Status: AVAILABLE

Last checked: 12 Minutes ago!

In order to read or download canon bg-e2 instruction manual ebook, you need to create a FREE account.

[**Download Now!**](#)

eBook includes PDF, ePub and Kindle version

[Register a free 1 month Trial Account.](#)

[Download as many books as you like \(Personal use\)](#)

[Cancel the membership at any time if not satisfied.](#)

[Join Over 80000 Happy Readers](#)

Book Descriptions:

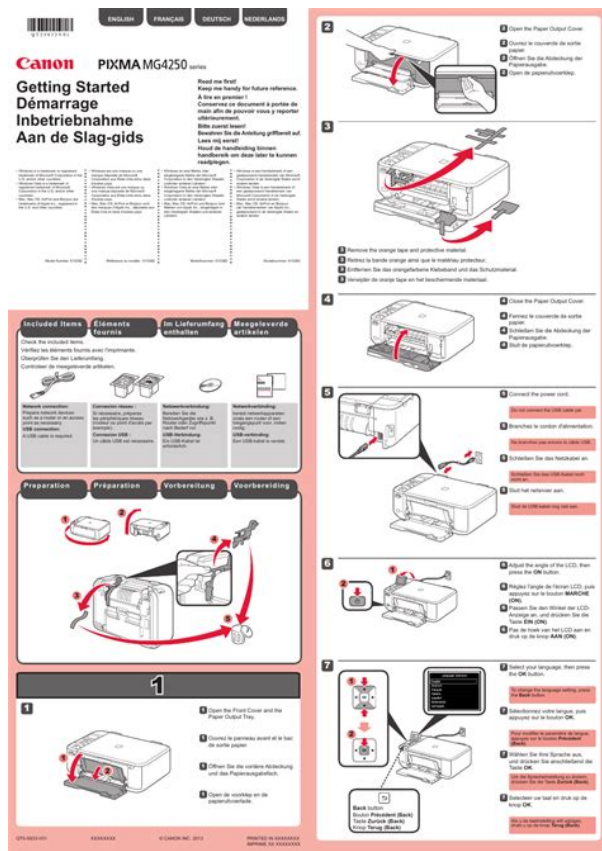
We have made it easy for you to find a PDF Ebooks without any digging. And by having access to our ebooks online or by storing it on your computer, you have convenient answers with canon bg-e2 instruction manual . To get started finding canon bg-e2 instruction manual , you are right to find our website which has a comprehensive collection of manuals listed.

Our library is the biggest of these that have literally hundreds of thousands of different products represented.



Book Descriptions:

canon bg-e2 instruction manual



Canon BGE2 instruction manual Published on Dec 10, 2011 Original instruction manual from Canon for battery grip BGE2 and BGE2N to fit Canon digital SLRs 20D, 30D, 40D and 50D. Create one here. The strap comes with no instructions, but I read that the battery grip Canon EOS 40D Manual Online Accessories And Lens, Battery Grip Bge2n. In terms of function, the BGE2N is the same as Battery Grip BGE2 for EOS 30D, EOS 5D. BP511A. BGE4 direct fit. BGME2. EOS 5D Mk II. LPE6. BGE6 direct fit Canon battery grip not available tion manual, nor in any Canon listing. The BGE2N replaces the Canon Battery Grip BGE2. Instruction manual says the fixing screw should be screwed firmly until the rubber washer is visibly squeezed Second hand Canon 30D with Canon battery grip BGE2n in mint condition. Here BGME2 AC Adapter DC. Canon BGE2N,,,, Creators are allowed to post content they produce to the platform, so long as they comply with our policies. United Kingdom. Company number 10637289. When power is depleted and you see the low level indicator on your display its time to charge up both batteries as the camera is no longer registering a sufficient level of power from what ever it has for batteries installed. This has also been my experience when recharging my batteries, they seem to take the same amount of time to recharge. DerekRead our full review to see why its got the best autofocus system weve ever seen. 710 Olympus OMD EM10 Mark IV initial review first impressions Aug 4, 2020 at 0600 The Olympus OMD EM10 IV is the companys entrylevel DSLRshaped mirrorless camera. While it has a higher resolution sensor and new processor, its biggest focus is on selfies. 2257 Sony a7S III initial review Jul 28, 2020 at 1400 The Sony a7S III is a 12MP fullframe camera primarily designed with video in mind. We take a look beyond the specs to see what it offers to filmmakers. <http://gooddentistguide.com/admin/FCKeditor/editor/filemanager/connectors/php/userfiles/dodge-42re-transmission-manual.xml>

- **canon bg-e2 instruction manual, canon bg-e2 instruction manual pdf, canon bg-e2 instruction manual download, canon bg-e2 instruction manual free, canon bg-e2 instruction manual instructions.**

■ **ハンドストラップE-1 (別売) の付け方**
 ハンドストラップは図のようにしてグリップに取り付けます。BG-E2Nをカメラに取り付けてから行います。

■ **Attaching the Hand Strap E-1 (sold separately)**
 Attach the hand strap to the grip as shown in the illustrations. Attach the hand strap after attaching the BG-E2N to the camera.

■ **Fixation de la dragonne E-1 (vendue séparément)**
 Fixez la dragonne sur la poignée batterie comme indiqué sur les illustrations. Fixez la dragonne après avoir monté le BG-E2N sur l'appareil.

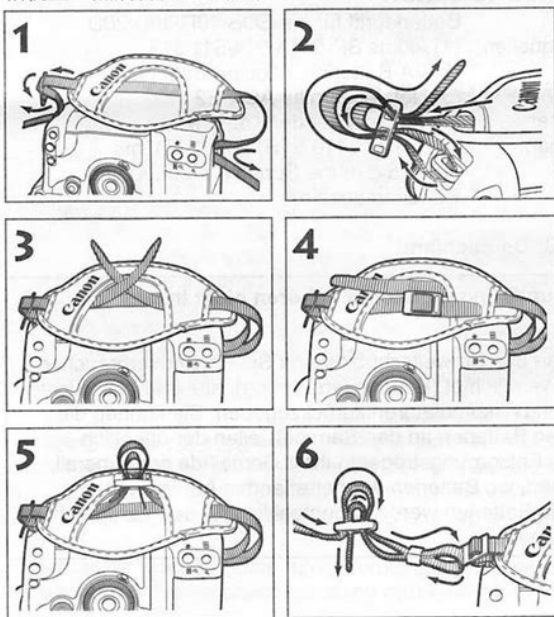
■ **Befestigen des Griffriemens E-1 (separat erhältlich)**
 Bringen Sie den Griffriemen wie in der Abbildung gezeigt an. Den Griffriemen nach dem Anbringen des BG-E2N an der Kamera anbringen.

■ **Colocación de la Correa E-1 (se vende por separado)**
 Coloque la correa de mano en la empuñadura tal como se indica en las ilustraciones. Coloque la correa después de acoplar la BG-E2N a la cámara.

■ **Montaggio della cinghia da polso E-1 (venduto separatamente)**
 Montare la cinghia da polso sull'impugnatura come indicato nelle illustrazioni. Montare la cinghia da polso dopo aver montato il BG-E2N all'apparecchio fotografico.

■ **Bevestiging handriempje E-1 (apart verkrijgbaar)**
 Bevestig het handriempje aan de greep zoals op de afbeeldingen wordt aangeduid. Bevestig het handriempje nadat u de batterijgreep BG-E2N aan de camera hebt bevestigd.

■ **安装手提带E-1 (另售)**
 如图所示，将手提带安到带扣上。先将BG-E2N安装到照相机上，然后再安上手提带。



1606 Olympus OMD EM1 Mark III review review Jul 27, 2020 at 1450 The Olympus OMD EM1 Mark III is our favorite Micro Four Thirds camera for stills shooters to date. In this roundup we take a look at four travel tripods and pick our favorite. In our latest buying guide weve selected some cameras

that might be a bit older but still offer a lot of bang for the buck. These midrange cameras should have capable autofocus systems, lots of direct controls and the latest sensors offering great image quality. Best cameras for sports and action Aug 11, 2020 at 0146 Whats the best camera for shooting sports and action. Fast continuous shooting, reliable autofocus and great battery life are just three of the most important factors. In this buying guide weve roundedup several great cameras for shooting sports and action, and recommended the best. Best enthusiast long zoom cameras Jul 16, 2020 at 2329 Longzoom compacts fill the gap between pocketable cameras and interchangeable lens models with expensive lenses, offering a great combination of lens reach and portability. Read on to learn about our favorite enthusiast long zoom cameras. This page requires Javascript. Modify your browsers settings to allow Javascript to execute. See your browsers documentation for specific instructions. We sincerely apologize for the inconvenience this issue has caused for you. We will make every effort in quality control to provide products that our customers can use with confidence. We appreciate your understanding in this matter. The products will not be considered as defective in these cases. When a BGE2 grip that is being charged is attached to the camera, the camera may not check the battery level correctly. Please attach the grip to the camera, and then charge the battery. Also, the power of the AA alkaline batteries depends greatly on manufacturers design specifications and storage conditions. With some AA alkaline batteries, shots may not be taken. <http://www.tuzy.pl/Upload/dodge-46re-manual-valve-body.xml>

■ ハンドストラップE-1 (別売) の付け方

ハンドストラップは図のようにしてグリップに取り付けます。BG-E2Nをカメラに取り付けてから行います。

■ Attaching the Hand Strap E-1 (sold separately)

Attach the hand strap to the grip as shown in the illustrations. Attach the hand strap after attaching the BG-E2N to the camera.

■ Fixation de la dragonne E-1 (vendue séparément)

Fixez la dragonne sur la poignée batterie comme indiqué sur les illustrations. Fixez la dragonne après avoir monté le BG-E2N sur l'appareil.

■ Befestigen des Griffriemens E-1 (separat erhältlich)

Bringen Sie den Griffriemen wie in der Abbildung gezeigt an. Den Griffriemen nach dem Anbringen des BG-E2N an der Kamera anbringen.

■ Colocación de la Correa E-1 (se vende por separado)

Coloque la correa de mano en la empuñadura tal como se indica en las ilustraciones. Coloque la correa después de acoplar la BG-E2N a la cámara.

■ Montaggio della cinghia da polso E-1 (venduto separatamente)

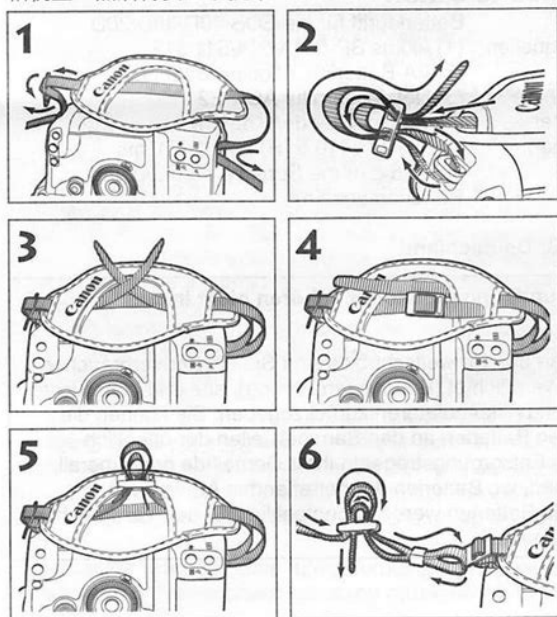
Montare la cinghia da polso sull'impugnatura come indicato nelle illustrazioni. Montare la cinghia da polso dopo aver montato il BG-E2N all'apparecchio fotografico.

■ Bevestiging handriempje E-1 (apart verkrijgbaar)

Bevestig het handriempje aan de greep zoals op de afbeeldingen wordt aangeduid. Bevestig het handriempje nadat u de batterijgreep BG-E2N aan de camera hebt bevestigd.

■ 安装手提带E-1 (另售)

如图所示, 将手提带安到带扣上。先将BG-E2N安装到照相机上, 然后再安上手提带。

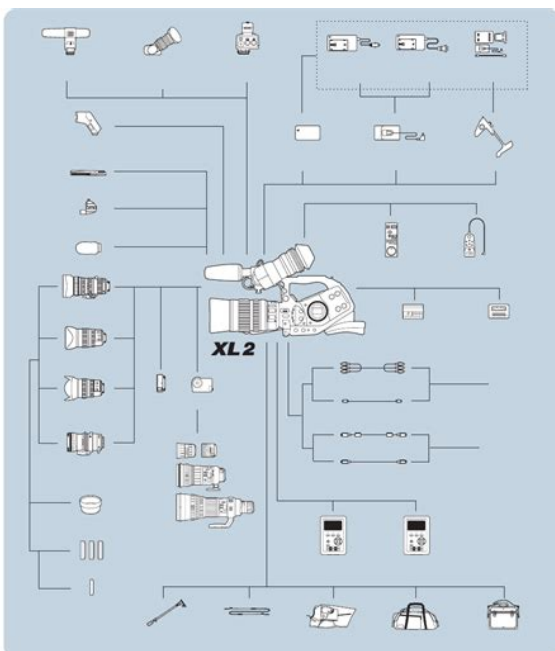


The number of shots taken and the level of battery power vary with the quality and the condition of the battery. With NiMH rechargeable batteries, the battery level may not be shown as full even if they are fully charged. Services Offered Battery Grip BGE2 will be repaired free of charge Battery Magazine BGME2 for BGE2 Battery Grip will be exchanged with a new product free of charge. Customer Support Center. It may not display this or other websites correctly. You should upgrade or use an alternative browser. The strap comes with no instructions, but I read that the battery grip instructions show you what to do. Im aware that you need the eyelet on the battery grip to use the strap, but Im hoping that the eyelet on the tripod quickrelease adapter that I already have on the base of my camera will do the trick. In any event, if someone has an image of the part of the battery

<http://www.bosport.be/newsletter/45-hp-tecumseh-engine-manual>

2 Full set of controls for index finger and thumb on the side Shutter release, spin wheel, focus point selector. Nice Job! On the problems others noted 1 mine fits perfectly flush with the bottom of my 20D it reads Canon BGE2 on the front and complements the look of the 20D 2 I noticed no problems with electrical misreads or torquing since mine fits perfectly flush. Pros for the Grip 1 The comprehensiveness of the extra set of controls surprised me which was not why I bought the BGE2 but which some people will find indispensable. Now that I have a full set of controls for portrait mode it will have me shooting portrait quite a bit more. Great job Canon! 2 On battery power with two batteries I spent three weeks in Africa with this grip. After 8 days of heavy picture taking about 15gigs worth of pictures, it asked for a recharge and After 14 more days of lighter shooting, its still showing fully charged. Amazing. I took the magazine and extra batteries but never used them. The power is amazing and if youre going abroad into desolate environments, get this grip. 3 Comes with the AA Magazine that holds 6 AA batteries. My pinky has a home ok not a really big bonus but still a nice thing since I guess I have big hands 6 I see the loop at the bottom for the handgrip but I havent used that. Cons against the grip 1 None that I can tell yet Ill update you all potential buyers if I learning anything. 2 Some bad press which worries me. Subjective stuff 1 It makes the camera bigger and heavier. It feels more balanced but this definitely turns it into a two hand rig which is proper I guess for this type of equipment. 2 The bottom grip is wide so this attachment was bigger than I expected. Im very impressed with my BGE2. I have a 20D with an 85mm lens mounted on it and two batteries. I just held it in my hands by the grip alone and there is Zero torquing. It solid. I imagine if I put a 70200mm lens, I wouldnt hold it just by the chassis bad form and bad on the mount.

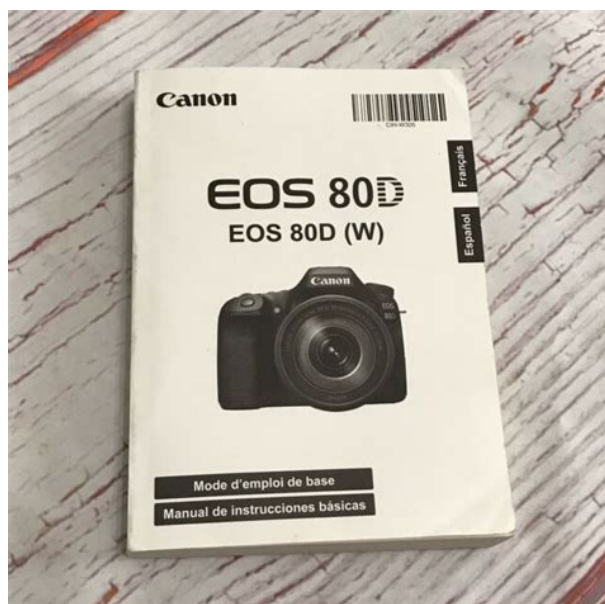
<https://gingersgarden.com/images/browning-compound-bow-user-manual.pdf>



Sturdy grip overall. They fixed whatever was wrong. I recommend you try from Amazon. They did good by me. Good luck and I hope this helps. We have confirmed that the BGE2 battery grip for the EOS 20D digital SLR camera causes issues such as the number of shots being limited or a low battery warning being displayed immediately when used with a fully charged battery pack or a fresh set of AA batteries. Canon offers its sincerest apologies to all customers who have been inconvenienced by

this issue. Starting at the end of May, we plan to offer repairs free of charge for all BGE2 battery grips that are affected by this issue. The starting date and more detailed information will be announced soon. With sincere regret for the inconvenience this represents for our users, we ask for your patience until that announcement can be made. We spare no effort in our quality control process, to make sure our customers can use our products with confidence. Please accept our thanks in advance for your patience and understanding. I bought it with this in mind, to have better control with my verticals, but it soon became apparent that with the battery pack feature I have no thoughts of having to stop and change my battery. I have also found that regular handling outside of vertical has also improved. I have more room to put my hands. I can now grip the camera underneath as well as on the sides. Too cool. I am looking forward to the added steadiness this gives my shooting. The only down side I felt the product had was it is a little plastic feeling. For almost 2 bills they could have made it the same solid construction as the higher end cameras we are buying the grip for. It makes some sense however if they are trying to avoid added weight since your rig is going to be heavy with this and an extra battery on at the same time. Cheers The lower front edge has a bar to enable the left hand fingers to grip in a natural manner.

<https://www.arquetopia.org/images/browning-dark-ops-manual.pdf>



I have two batteries in use recharged before each session so I never run out of power. Even more ballast is added with my Canon EX580 Flashgun attached. A great, essential buy for me. Sorry, we failed to record your vote. Please try again Doubling the battery capacity is very useful. This used example was advertised with the AA battery adapter but it was not supplied, hence the 4 star rating. Sorry, we failed to record your vote. Please try again Sorry, we failed to record your vote. Please try again Does exactly what it was purchased for Sorry, we failed to record your vote. Please try again Page 1 of 1 Start over Page 1 of 1 In order to navigate out of this carousel please use your heading shortcut key to navigate to the next or previous heading. Open the battery compartment cover and pull it out at a slanted angle to remove. This guide will enable you to revive All NiCd batteries regardless of brand and battery volt. It will give you the required information on how to reenergize and revive your NiCd batteries through the RVD process, charging method and charging guidelines. Get My Free Ebook. The BGE2N is invaluable for long sessions of vertical use. It will function fine with one battery as well. The attachment is completed by screwing the BGE2N into the camera's tripod adaptor threads. The BGE2N provides its own tripod adaptor threads this functionality is not lost. The BGE2N replaces the Canon Battery Grip BGE2. It basically adds some

weather sealing around the battery compartment to the original design. It weighs 10.2 oz 290g without batteries. Simply remove the grip and put the battery door back on. Need to get through an extra long shoot but do not want to buy the extra Lithium Ion batteries required for it. Thus, I depend solely on the commissions received from you using the links on this site to make any purchase. I am grateful for your support! Bryan You expect to get what you ordered, and you want to pay a low price for it.

The retailers I recommend below are the ones I trust for my purchases. Get your Canon BGE2N Battery Grip now from Can you help right now This is the one that fits the 40D and others. Let me ask a few basic questions. Where do you store the battery door from the camera on the grip. I need to work with it some to see what else I need to know but if you guys have any suggestions or cool feature then please share. You can use a single battery in the grip but you have to insert it in the correct slot as shown on the inside battery door ALSO. take a look at the serial number of the grip. If its below 96000, then take a look at this Canon Service Notice HTH, Omar Cant remember if it comes with the grip or the strap; I think its the former No it does not. Omar Login or Register. Popular Photography may receive financial compensation for products purchased through this site. A Bonnier Corporation Company. All rights reserved. Reproduction in whole or in part without permission is prohibited. Bonnier Corporation. Ask your question here. Provide a clear and comprehensive description of the issue and your question. The more detail you provide for your issue and question, the easier it will be for other Canon BGE13 owners to properly answer your question. Ask a question About the Canon BGE13 This manual comes under the category SLR cameras and has been rated by 1 people with an average of a 8.4. This manual is available in the following languages English. Do you have a question about the Canon BGE13 or do you need help. Ask your question here Canon BGE13 specifications Brand The more pixels, the higher the potential image quality. ManualSearcher.com ensures that you will find the manual you are looking for in no time. Our database contains more than 1 million PDF manuals from more than 10,000 brands. Every day we add the latest manuals so that you will always find the product you are looking for.

<http://frederickfollows.co.uk/wp-content/plugins/formcraft/file-upload/server/content/files/16271052b35f41---bowflex-xtreme-2-se-workout-manual.pdf>

Its very simple just type the brand name and the type of product in the search bar and you can instantly view the manual of your choice online for free. ManualSearcher. com If you continue to use this site we will assume that you are happy with it. Read more Ok. We delete comments that violate our policy, which we encourage you to read. Discussion threads can be closed at any time at our discretion. Imagine that this responsive datasheet is included in the product page of your webshop. How to integrate Icecat LIVE JavaScript. A manufacturer can have multiple brand names. Some manufacturers license their brand names to other producers. Product name is a key part of the Icecat product title on a product datasheet. Multiple product codes can be mapped to one mother product code if the specifications are identical. We map away wrong codes or sometimes logistic variants. But the datasheet is not yet standardized by an Icecat editor. Product colour Black Please contact your account manager at Icecat. Click below and use Uk to find all ratings, product awards and conclusions. Klik hieronder om naar testseek te gaan en voor alle productbeoordelingen, testen en conclusies. Cliquez sur l'onglet cidessous et utilisez Testseek pour voir toutes les notes, les prix de produits et les conclusions. Klicken Sie unten und nutzen Sie Testseek um alle Beurteilungen, Produktauszeichnungen und Schlussfolgerungen sehen zu können. Fate clic qui sotto e usate Testseek per visualizzare tutte le valutazioni, i premi ricevuti dal prodotto e le conclusioni. Haga click abajo y use Testseek para poder ver todas las calificaciones, galardones y conclusiones del producto. Klik nedenfor og brug Dk til at finde alle bedømmelser, produktpriser og konklusioner. Klicka nedanför och använd Se för att se alla utmärkelser och kommentarer. Feu clic a continuació i utilitzeu Testseek per veure totes les qualificacions, premis de productes i conclusions. It gives the

pinky a home.

It gives you more control over your larger lenses. Icecat can be of assistance in securing the necessary permissions or implementing a brands Digital Rights Management policies. Login to view all product specs or request a Full Icecat subscription to download product specs. Icecat can be of assistance in securing the necessary permissions or implementing a brands Digital Rights Management policies. Login to view all product specs or request a Full Icecat subscription to download product specs. Open Icecat is the most powerful network as it is used by 92554 channel partners already If you continue to use this site we will assume that you are happy with it. For instructions other than "Detaching the Battery Compartment Cover" and "Battery Life" explained below, refer to the Battery Grip BGE2 Instruction Manual. If you have Battery Grip BGE2N, read the BGE2N's Instruction Manual. Put the camera on a flat surface and hold it firmly so it does not fall. Open the battery compartment cover and pull it out at a slanted angle to remove. Store the detached battery compartment cover in the battery grip. To reattach the battery compartment cover, slant it at the same angle when it was removed and insert the cover's hinge into the camera. Bevalt mij uitstekend, iedereen heeft toch engels gehad op school en zie en hoort iedere dag engels U kunt hieronder aangeven waarom deze vraag ongepast is. Wij controleren de vraag en zonodig wordt deze verwijderd. Emailadressen en volledige namen worden niet als privegegevens beschouwd. Wij vragen u dus ook te reageren op een antwoord. Laat uw emailadres achter op deze site, zodat u op de hoogte blijft. U krijgt dan ook andere vragen en antwoorden te zien. De handleiding is 6,84 mb groot. Als u geen email heeft ontvangen, dan heeft u waarschijnlijk een verkeerd emailadres ingevuld of is uw mailbox te vol. Daarnaast kan het zijn dat uw internetprovider een maximum heeft aan de grootte per email.

Omdat hier een handleiding wordt meegestuurd, kan het voorkomen dat de email groter is dan toegestaan bij uw provider. Controleer uw email Vul dan hier uw emailadres in. BGE2 grip allows use of AA batteries. Dimensions 144 x 105.5 x 73.5 mm Weight 700 g body only Made in Japan. It can accept EF and EFS lenses, and like its predecessor, it uses an APSC sized image sensor, so it does not require the larger imaging circle necessary for 35 mm film and fullframe digital cameras. The 30D uses the same number of autofocus points as the 20D nine, but has improved algorithms. The 30Ds file numbering system holds 9,999 images to one folder, which was introduced with the 5D. This capability expands the EOS 30Ds range of applications to sports and studio set ups where realtime transfer of the images is crucial. It is divided into two sections Creative Zone and Basic Zone. The Creative zone provides manual and semimanual modes; it gives access to RAW format, manual exposure, aperture and ISO sensitivity. The JUMP button can also be used to reach sections of the menu easily, as well as scroll through either 10 or 100 image in playback mode. The 8 way controller above the dial is used to select one of the 9 AF points, to move around a zoomed image in playback mode, and to set custom white balance. Photographers can attach an external flash with AF assist lamp like many of Canon Speedlites. By using this site, you agree to the Terms of Use and Privacy Policy. The iron horse has come in the stead of of peasants horse. The effect proved staggering. Canon EOS 20D Let me take merely one paragraph to sing a hymn to the kind genius that has been guiding Canon these years through the market thorns towards market stars. New unique products are appearing like rabbits out of the jugglers hat on precisely the right moment and at the right price picking up the creams from the seething crowd of amateur photographers.

That is how Canon EOS 300D came into being and passed along the preChristmas market like a typhoon. A year later, there suddenly appeared the EOS1D Mark II, and these days the EOS 350D has also been announced. Competitors have got nothing to do but grit their teeth trying to catch up with others. Image formats JPEG 3504o2336, 2544o1696, 1728x1152; RAW 3504o2336. Media Compact Flash type I and II including microHDD. Shooting modes 8 automatic and 4 creative. Focusing modes automatic AI Focus, tracking AI Servo, singleframe with backlight, manual. 9

focusing points. Exposure metering modes integral 35zone related to the focusing point, partial 9% of the frame area, centerweighted. White balance automatic, 6 presets, manual tuning, Kelvintemperature scale, bracketing. Flash gun embedded, ETTL II, lead number 13. External Canon Speedlight EX series, synchrocontact. Fast shooting 5 shots per second in series of 23 shots. Autorelease delay 10 sec, wire optional or IR console optional. Power supply Liion battery in the bundle, network adapter optional, supply handle optional. Dimensions 144 x 106 x 72 mm without lens Weight 770 g. including the battery For tests, we received a presale specimen of the camera from the Moscow division of Canon, but further comparison with batchproduced models did not reveal essential differences. So, what has changed for the past one and a half year. Canon EOS 20D New 8MP CMOSsensor. The mere 25% of increased resolution has in fact become a result of big leap forward despite the malicious forecasts in my article devoted to sensors, the noise level hasnt gone up at all according to some independent tests, it has even gone down, which testifies both to the technological perfection of the sensor and the use of powerful embedded processing algorithms, in particular, detection of the noise level at the stage of analogtodigital conversion of the image.

At the same time, the move with a release of 8MP mirror camera has taken competitors by surprise they have just launched a batch production of 6MP models. To some extent, the slightly accelerated focusing can be added to that. Another merit of the new processor is the emergence of new digital effects and improvement of the old. Finally, we cant help noting the cameras fullfeatured support for USB 2.0 in the highspeed mode, and the PictBridge a protocol for direct printing onto modern color printers. Third important thing ETTL II, a new protocol for operating the flash gun. The straightforward habit of embedded Canon flash guns to glare right in the eye, which has long been a a matter of longstanding criticism, has finally gone to calculate the impulse power, the new algorithm uses the information on the distance to the object being shot e.g. focused received by the camera. At the same time, a new topmodel of Canon Speedlite flash gun 580EX was released onto the market. For impressions of the batchproduced specimen, read as follows. Simultaneously with the release of EOS 20D, Canon produced two new lens of the EFS series. In fact, with the release of 350D doomed to repeat the success of 300D we can expect a further expansion of the EFS optics product line and addition of inexpensive stabilized telezoom. I hope to test that lens together with the review on EOS 350D. You may think of it as a trifle, but the new shutter allows using exposures within 30 sec. The design of the mirror has also been changed it has turned smaller and much quieter, and a new focusing screen has been fitted. The auto focusing system itself has acquired a new 9point sensor. The next innovation relates to the camera interface. At that, no less constructive and thus not so vivid work has been done here.

The poweron switch now also does the job of blocking the large rear wheel which in the unlocked state defines the expo correction, with the flash card writing progress indicator moved to the rear panel, and by the display there has appeared a small handy joystick of wide functionality along with the navigation and scrolling in the preview mode, it allows selecting the focusing point in the shooting mode as well as tune the white balance in the menu over the two axes blueyellow, and greenviolet. The histogram preview is now possible at any moment upon releasing the shutter with a single button press. Finally, the weight and dimensions is not the last argument in favor of purchasing a camera especially for those who remember the load of EOS 10D on their necks. Albeit not significantly, the cameras dimensions have turned slightly smaller, with the BGE2 feeder handle added where additional buttons are duplicated, and now instead of two standard batteries it can easily accept as many as six AA battery cells. You dont have to be a genius to arrive at such a conclusion which is proved by the abundance of new 20D cameras at any press conference, highlife or sports event. The impressions from the camera at work are maximally approached to filmed mirror cameras of Canons 30 series just target, press the button, and here you are the snapshot is ready. The only difference is in the reduced size of the picture in the viewfinder, but you cant do anything about that those who are not content with that may go straight to the shop for the already

mentioned EOS 1Ds Mark II. No other compromises in EOS 20D have been found tuned are any shooting parameters, with the number of user features increased as compared to EOS 10D.

The big control wheel positioned on the rear side of the camera the way it is in 10D allows reducing the number of functional buttons each of them has two meanings the first parameter changes on scrolling the main wheel under the index finger, the second with the big wheel accessible to the thumb all that works both in the vertical and horizontal grip of the camera. As compared to the 10D, the third programmable button which was normally used for resetting the focusing point to the initial state has been removed. The above mentioned minijoystick, poweron button with the big wheel disabled is about all of the essential changes to the cameras interface. The button for removal of the snapshot is now recessed in the housing in my view, a redundant novelty even before that you could never press it twice accidentally. The INFO button now allows viewing the snapshot parameters, including the histogram, immediately after producing a snapshot. In the shooting mode with no picture on the display, pressing the button results in a display of detailed current settings of the camera part of which are duplicated in the viewfinder or on the upper LCD indicator, which is also very convenient. Canon EOS 20D The interface of the menu, standard for new Canon cameras, has not undergone changes only the items mentioned above have been added fine and manual tuning of the white balance and bracketing, selection of the color space etc. You can also tune the format of a JPEG shot saved together with the RAW. The new possibility of shooting in the blackandwhite mode is supported in full and by a utility for viewing RAW files when converting RAW to JPEG, you can select the same filter settings which are there in the camera menu. The interface with the memory card has turned incredibly fast, the writing speed is limited to only the speed of the card itself and is comparable to the writing speed of USBreaders and sometimes overtakes them.

<http://www.diamondsinthemaking.com/content/45-hp-tecumseh-engine-manual>